

# OTDR Report



## General Information

Filename: 2-6-7.trc  
Test date: 3/6/2024  
Test time: 3:44:54 AM  
Cable ID:  
Job ID:  
Comments:

Customer:  
Company:  
Fiber ID: Fiber79

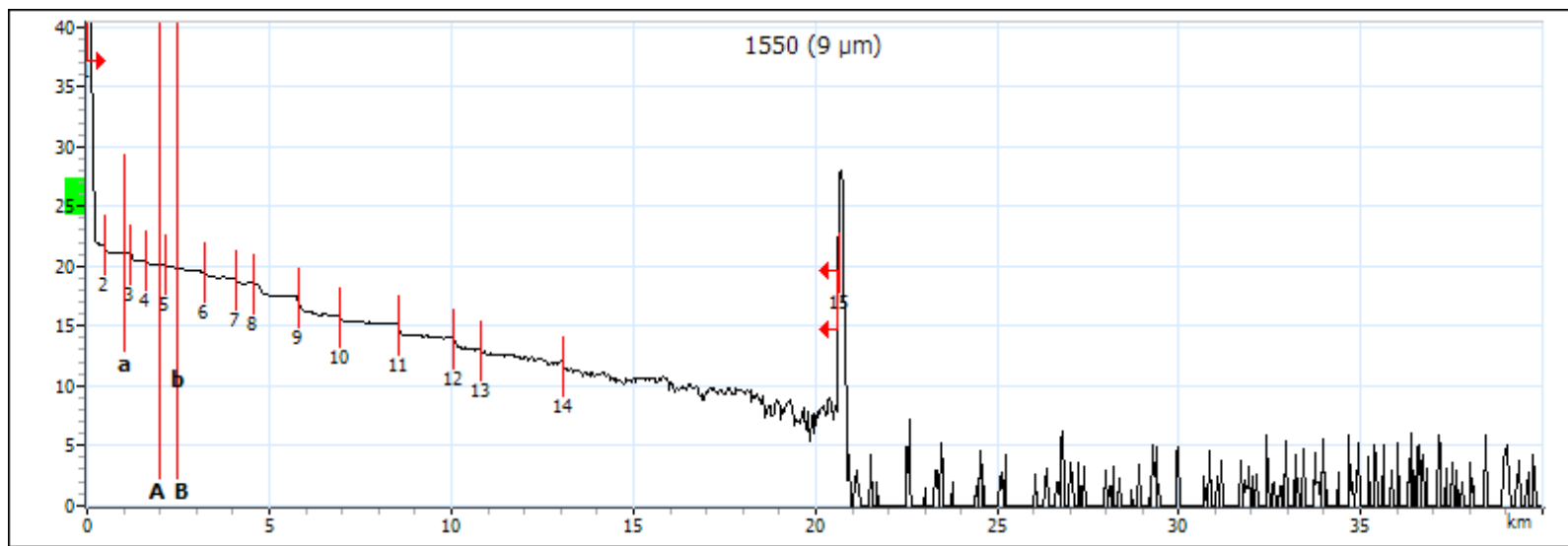
## Locations

	Location A	Location B
Location		
Operator		
Model	MAX-710B-M1-EA	
Serial number	848655	
Calibration date	7/16/2015 (UTC)	

## Results

Span length: 20.6470 km      Average loss: 0.705 dB/km      Injection level: 22.0 dB  
Span loss: 14.547 dB      Average splice loss: 0.549 dB  
Span ORL: <10.78 dB      Maximum splice loss: 1.187 dB

## Graph



## Markers

Marker	Position (km)	Value (dB)
a	1.0004	21.068
A	2.0009	20.126
B	2.5011	19.762
b	2.5011	19.762

A-B LSA attenuation: 0.725 dB/km      A-B average loss: 0.728 dB/km  
A-B LSA loss: 0.250 dB      4-point Event Loss: 0.560 dB  
A-B ORL: 45.20 dB      Maximum reflectance: -59.2 dB

## Event Table

Type	No.	Pos./Length (km)	Loss (dB)	Reflectance (dB)	Attenuation (dB/km)	Cumulative (dB)
First Connector	1	0.0000	---	> -20.6		0.000
Section		0.4798	0.240		0.500	0.240
Non-Reflective	2	0.4798	0.623			0.862
Section		0.7274	0.102		0.141	0.965
Non-Reflective	3	1.2072	0.585			1.550
Section		0.4237	0.052		0.123	1.602
Non-Reflective	4	1.6308	0.252			1.854
Section		0.5385	0.054		0.100	1.908
Non-Reflective	5	2.1693	0.223			2.132
Section		1.0847	0.420		0.387	2.552
Non-Reflective	6	3.2540	0.283			2.835
Section		0.8524	0.248		0.291	3.083
Non-Reflective	7	4.1064	0.386			3.469
Section		0.4594	0.046		0.100	3.515
Non-Reflective	8	4.5658	0.868			4.383
Section		1.2352	0.244		0.198	4.627
Non-Reflective	9	5.8011	1.187			5.814
Section		1.1561	0.465		0.403	6.279
Non-Reflective	10	6.9572	0.340			6.619
Section		1.5951	0.296		0.186	6.915
Non-Reflective	11	8.5523	0.856			7.771
Section		1.5339	0.308		0.201	8.079
Non-Reflective	12	10.0862	0.763			8.842
Section		0.7146	0.170		0.238	9.012
Non-Reflective	13	10.8008	0.227			9.239
Section		2.2995	0.992		0.432	10.231
Non-Reflective	14	13.1003	0.543			10.774
Section		7.5467	3.773		0.500	14.547
Reflective	15	20.6470	---	-10.2		14.547

## Macroband

Position (km)	Delta Loss (dB)

## Pass/Fail Thresholds

	1550 nm
Splice loss (dB)	0.300
Connector loss (dB)	0.750
Reflectance (dB)	-40.0
Fiber section attenuation (dB/km)	0.400
Span loss (dB)	20.000
Span length (km)	0.0000
Span ORL (dB)	15.00

## Test Parameters

	A → B
Wavelength (nm)	1550 (9 μm)
Range (km)	40.0000
Pulse (μs)	1
Duration (s)	15

## Test Settings

	A → B	Macrobend Wavelengths	Macrobend Delta Loss (dB)
IOR	1.468325		
Backscatter (dB)	-81.87		
Helix factor (%)	0.00		
Splice loss detection threshold (dB)	0.020		
Reflectance detection threshold (dB)	-72.0		
End-of-fiber detection threshold (dB)	5.000		